

PHOTOSHOP
dasturida chizish mashqlari

6_2

Extreme Photoshop CS

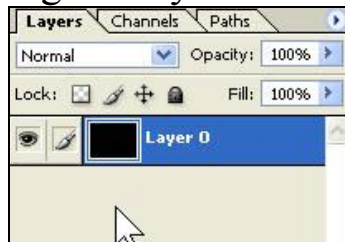
Matt Kloskowski



Asosida tuzilgan

Olovli yozuv hosil qilish mashqi

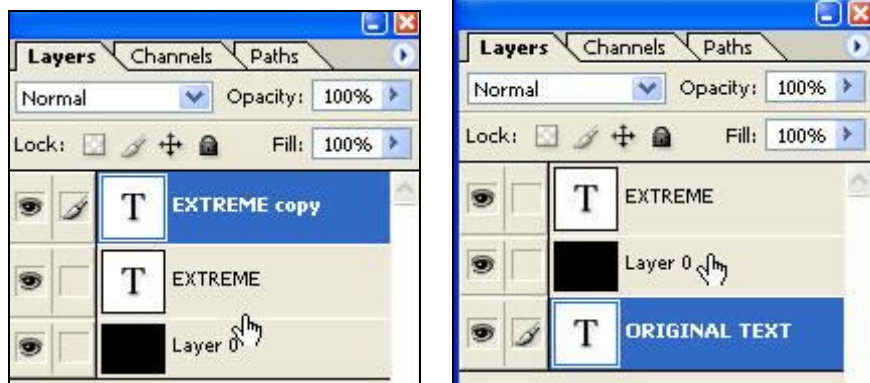
1. Yangi 800X600 px -ga hujjat yarating
2. [Layers] oynachasida, Background qavatni ustida [Alt] tugmasini bosib turib, qulf belgisi ustiga ikkimarta cherting.
3. “D” tugmasini bosib ranglarni qorf-oq holatiga keltirib, [Alt-BS] tugmalar yordamida rasmni qora rang bilan to'ldiring.



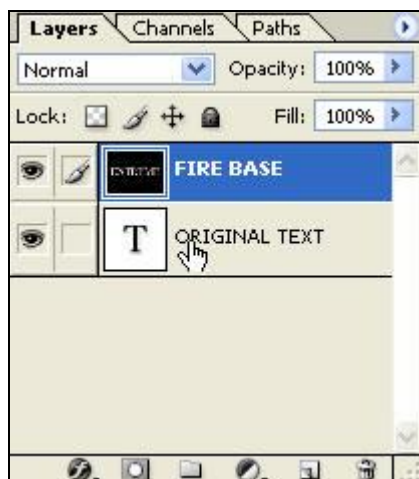
4. Type aslahasini tanlab matn kiriting.

EXTREME

5. [Ctrl-J] -ni bosib, matn qavatdan nusxa oling, nomini ORIGINAL TEXT bering va uni eng pastki qavatga olib o'ring



6. EXTREME qavatini faollashtirib, uni tagidagi qavat bilan [Ctrl-E] yordamida birlashtiring. Yangi hosil bo'lgan qavatga FIRE BASE nomini bering.



7. Hujjat matosini soat yurishiga qarshi 90° gradusga buring: [Image – Rotate canvas – 90 Degrees CCW]
8. FIRE BASE qavati faol holatida shamol filteriga kiring: [Filter – Stylize – Wind]. [Direction] (yonalishini) [From the Right] (o'ng tarafidan) holatini o'rnatib, Ok –ni bosing.



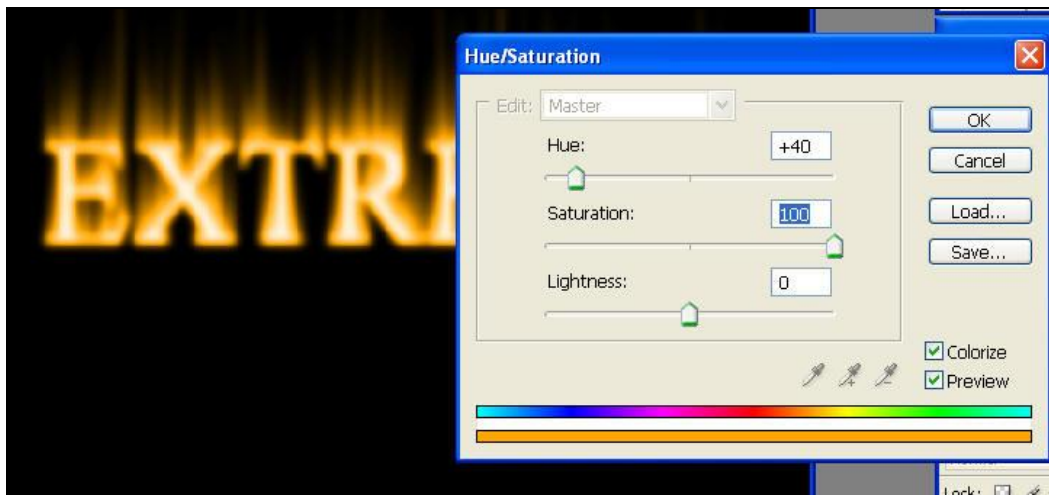
9. [Ctrl – F] tugmalarini 2-3 marta bosib, oxirgi ishlatilgan filtrni hujjatga tadbiq qiling.
10. [Image – Rotate Canvas – 90 CW] menu bo'limlarini tanlab rasmni burib o'z hoatiga qaytaring.



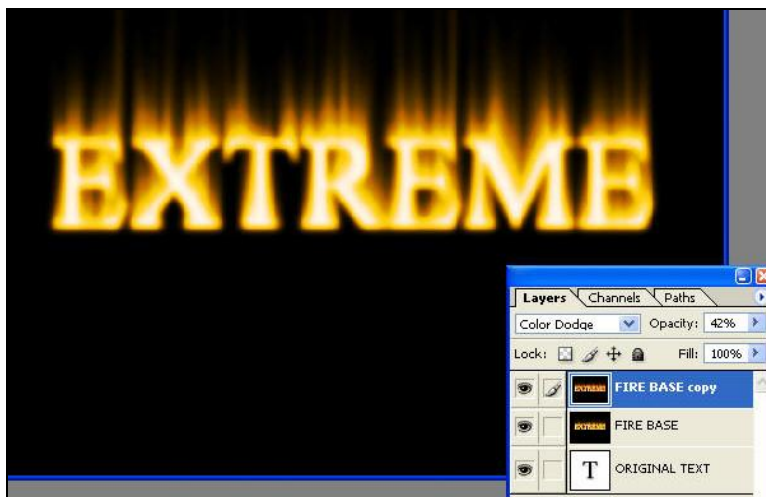
11. FIRE BASE qavati faolligida, [Filter – Blur – Guassian Blur] filtri yordamida, [Radius] berilmasini 3-4 piksel -ga o'rnatib tasvirni “yuving”.



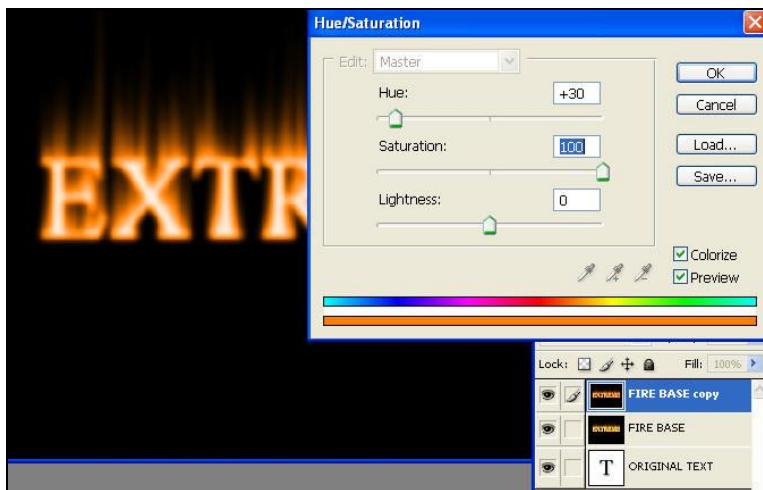
12. [Ctrl – U] tugmalarini bosib, [Hue/Saturation] oynachasida [Colorize] holatini yoqib, Hue – 40, Saturation – 100 berilmalarini o’rnatib, [Ok] tugmasini bosing.



13. [Ctrl - J] tugmalarini bosib, qavatdan nusha oling.



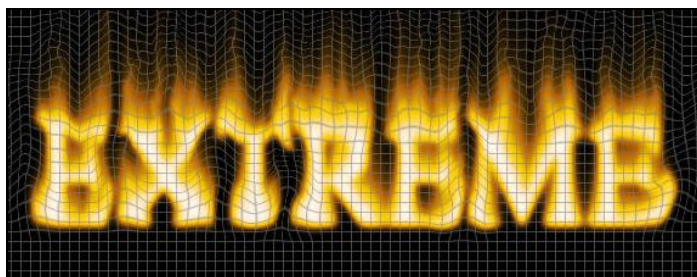
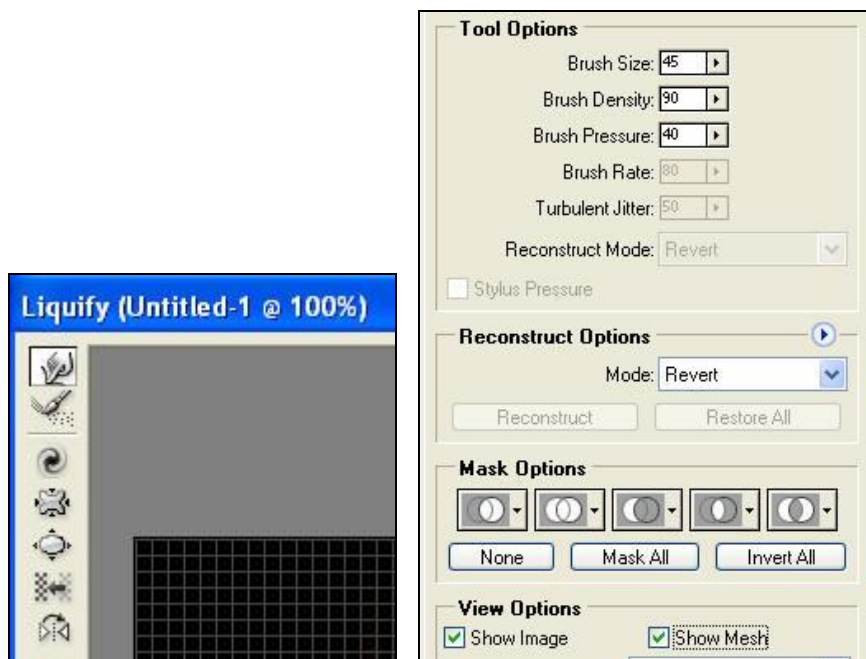
14. Nusha olingan qavat faolligida [Ctrl – U] tugmalarini bosib, [Hue/Saturation] oynachasida [Colorize] holatini yoqib, Hue berilmasini 30 qilib, [Ok] tugmasini bosing.



15. Nusha qavatni [Layers] oynachasida aralashish holatini [Color Dodge] –ga o’rnatib, uni FIRE BASE qavati bilan [Ctrl – E] tugmalari yordamida birlashtiring.



16. FIRE BASE qavati faolligida [Filter – Liquify] oynasida [Forward Warp] aslahasi yordamida, Brush size – 40, Brush Density – 90, Brush Pressure – 40 berilmalarini o’rnatib, Show mesh holatini yoqib, moy qalam bilan olovni ishlab chiqing.



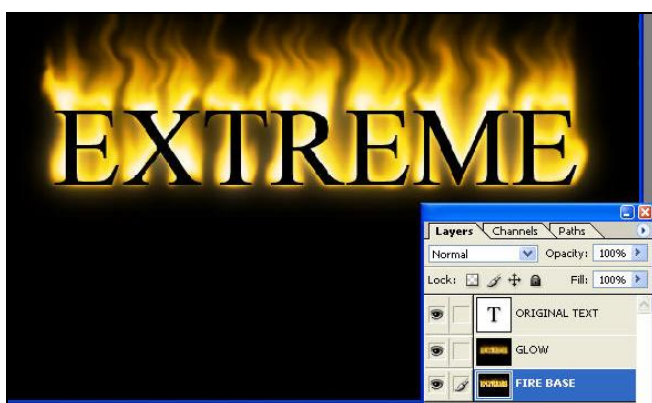
17. Moy qalam [Brush Size] uchini 15, bosish holatini [Pressure] 30 o'rnatib, olovga yana ishlov bering.
18. Turbulence (Brush Size – 40, Pressure – 30) Aslahasi yordamida olov to'lqinlarni hosil qilib, bu Liquify amalini yakunlash uchun Ok –ni bosing .



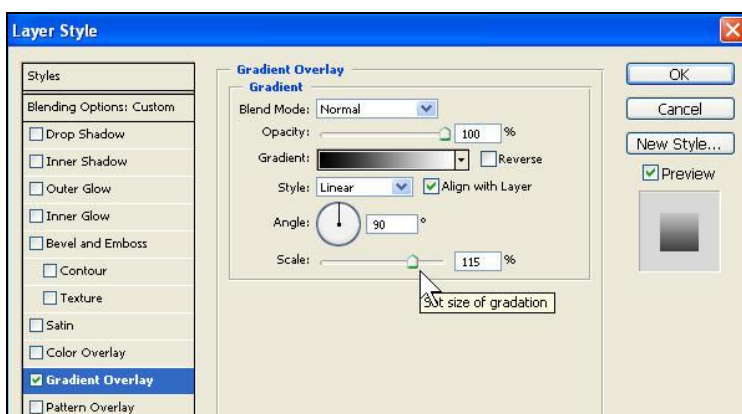
19. [Ctrl – J] bilan qavatdan nusxa olib, yangi qavatga Glow nomini bering va aralashish holatini Screen –ga o'rnatib.



20. [Filter – Blur – Guassian Blur] filtri yordamida, [Radius] berilmasini 13 piksel -ga oʻrnatib qavatni “yuving”.
21. Opacity holatini 66% -ga oʻrnatib
22. ORIGINAL TEXT qavatini eng yuqoriga joylashtirib, matni qora rangga boʻyang.



23. ORIGINAL TEXT qavatiga ikki marta chertib [Style] oynachasida [Gradient Overlay] usulini tanlab, Scale Mashtab –ni 115% oʻrnatib [Ok] tugmasiga bosing.



24. Oxirgisi, olovli matndan aksini hosil qiling. Bunung uchun to'rtburchak belgilash aslahasi yordamida matn va olovni to'liq belgilang, va [CTRL – Shift – C] tugmalari yordamida barcha qavatlardan nusxa oling.
25. Qavatlarni tevasidan yangi REFLECTION qavat yaratib, unga nusxani [Ctrl – V] yordamida tashlang.



26. Menuninig [Edit – Transform – Flip Vertical] buyrug'i yordamida nusxani aksini toping.
27. Yozuvni aksini joyiga joylashtirib, REFLECTION qavatiga maska qoshib, oq-qora gradiyent yordamida shafofligini taminlang.

Rasm hosil qilganingiz bilan TABRIKLAYMIZ!!!